

ROLANSINI
罗兰西尼系统门窗



PRODUCT
ALBUM

**KEEP ROOM
TEMPERATURE**

“隔热更好. 少开空调”

CONTENT

01

OUT SWING WINDOW

P9 / P16

02

TILT & TURN WINDOW

P17 / P26

03

SLIDING WINDOW

P27 / P34

04

BIFOLD WINDOW

P35 / P42

05

BIFOLD DOOR

P43 / P46

06

SLIDING DOOR

P47 / P60

07

HINGED DOOR

P61 / P68

08

SUNROOM

P69 / P74

CERTIFICATION



100,000m²

Square Meter

500+

Distributor

4.0

Digital Production

300+

Staff





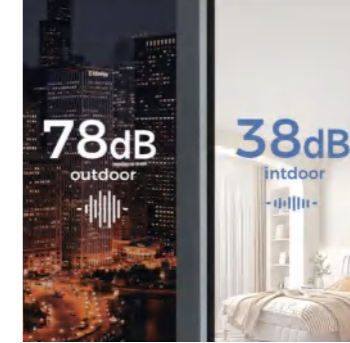
ROLANSINI ADVANTAGE OF WINDOWS & DOORS

Standard System Modular



Heat Proof

Multi-chamber thermal insulation structure, equipped with high-performance PA66 nylon strips and insulation cotton, prevents air convection and heat loss, keeping the room temperature.



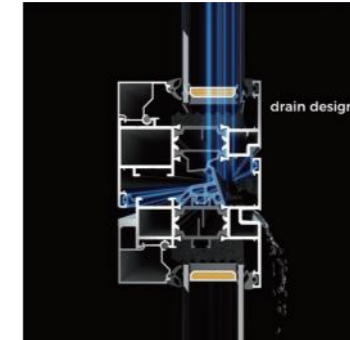
Sound Proof

Double tempered glass filling argon gas, multi-channel high sealing design.



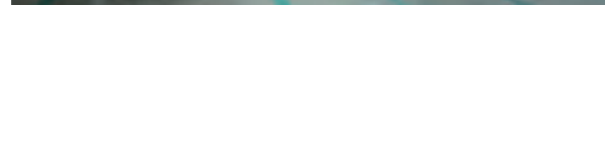
Security

Hidden multi-locking point design, difficult to be pried by external force, improving home safety.



Rain Proof

High-quality profiles can withstand ultra-high wind pressure.



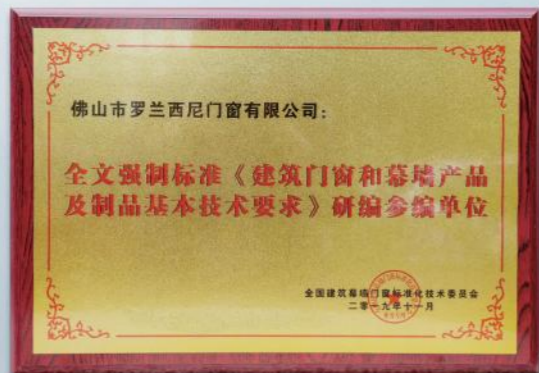
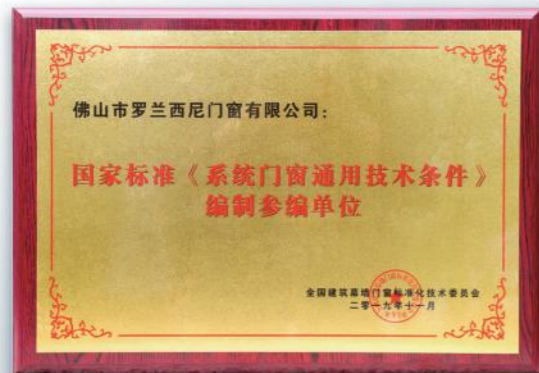
Safe Glass

Tempered glass has excellent thermal stability and bending resistance. When tempered glass breaks, it breaks into many small blunt-edged particles rather than large sharp fragments.



Avoid fogging

High-quality aluminum spacers or warm edge strips, filled with molecular sieves and bonded with high-strength and high airtightness composites, can prevent condensation at the glass edge and reduce heat loss at the glass edge.



ENTER THE WORLD
OF ROLANSINI DOOR & WINDOW



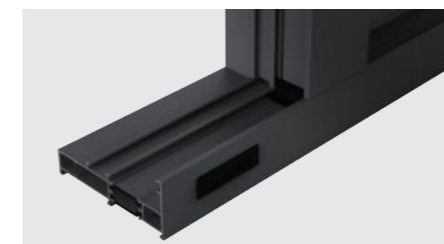
Q2 OUT SWING WINDOW



INNOVATIVE DESIGN

Q2 system stands for exceptionally economical window solutions. It also fulfills the highest quality demands with 3-chamber profiles and optimal thermal insulation.

- Profile thickness:1.4-1.8mm
- Frame Depth:100mm
- Frame Width:42.1mm
- Sash Width:77.5mm
- Glass Standard:5G+16A+5G
- Hardware:HOPO/SIEGENIA
- Mesh:304 ss/Nylon



PERFORMANCE

Thermal Insulation

3.5>Uw≥3.0W/m²K

Wind Resistant

P3≥5.0kPa

Sound Insulation(Rw)

32dB

Air tightness

LEVEL 7

Water Tightness

500≤ΔP<700pa

Type: Out swing window Awning Window Out swing&awning window

*Note:Performance based on glazing and size,the above conditions are laboratory theoretical data



INNOVATIVE DESIGN

G5 incorporate a 30mm mullion which allows for the creation of windows that are both higher and larger in dimensions. This system can utilize reinforced steel penetration technology, ensuring exceptional wind pressure resistance, even for windows exceeding 3.5 meters in height, an ideal choice for high-rise buildings or areas prone to high winds.

- Profile thickness:1.8mm
- Frame Depth:110mm
- Frame Width:44.1mm
- Sash Width:77.5mm
- Glass Standard:5G+20A+5G
- Hardware:HOPO/SIEGENIA
- Mesh:304 ss/316 ss/Nylon



PERFORMANCE

Thermal Insulation

3.0>Uw≥2.5W/m²K

Wind Resistant

P3≥5.0kPa

Sound Insulation(Rw)

32dB

Air tightness

LEVEL 7

Water Tightness

500≤ΔP<700pa

Type: Out swing window Awning Window Out swing&awning window

*Note:Performance based on glazing and size,the above conditions are laboratory theoretical data



INNOVATIVE DESIGN

R7 Top-tier materials, superior functionality, elegant design choices, and utmost flexibility provide a strong basis for uniquely customized windows, Exceptional thermal insulation properties with 6-chamber sealing and a foam-filled insulation zone.

- Profile thickness:1.8mm
- Frame Depth:70/125mm
- Frame Width:53.2mm
- Sash Width:77.5mm
- Glass Standard:5G+27A+5G
- Hardware:SIEGENIA
- Mesh:304 ss/316 ss/Nylon



PERFORMANCE

Thermal Insulation

2.5>Uw≥2.0W/m²K

Wind Resistant

P3≥5.0kPa

Sound Insulation(Rw)

35dB

Air tightness

LEVEL 7

Water Tightness

500≤ΔP<700pa

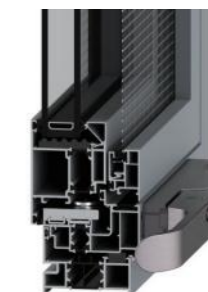
*Note:Performance based on glazing and size,the above conditions are laboratory theoretical data



INNOVATIVE DESIGN

R7C pull-out window is designed to kitchen. It offers a practical solution by not occupying indoor space, ensuring that it does not obstruct the faucet or sink area. This handle makes the window easy to open and close, providing convenience in daily use. Additionally, the screen panel can be effortlessly removed and reinstalled, making cleaning a breeze. Overall, this innovative window design enhances kitchen functionality while maintaining an unobstructed and efficient work-space.

- Profile thickness:1.8mm
- Frame Depth:70mm
- Frame Width:53.2mm
- Sash Width:77.5mm
- Glass Standard:5G+27A+5G
- Hardware:SIEGENIA
- Mesh:304 ss/316 ss/Nylon





INNOVATIVE DESIGN

F3 economical window systems for meeting high demands in terms of operating comfort and burglary resistance. Slim frame design enhances the aesthetic appeal while offers a more expansive view. Featuring an 29/39mm insulating strip design, improves the thermal insulation performance of the window, making it energy-efficient

- Profile thickness:1.8mm
- Frame Depth:70mm
- Frame Width:31.2mm
- Sash Width:70.4mm
- Glass Standard:5G+20A+5G
- Hardware:SIEGENIA
- Mesh:304 ss/316 ss/Nylon



PERFORMANCE

Thermal Insulation	Wind Resistant	Sound Insulation(Rw)	Air tightness	Water Tightness
2.5>Uw≥2.0W/m²K	4.5>P3≥4.0kPa	32dB	LEVEL 7	500≤ΔP<700pa

*Note:Performance based on glazing and size,the above conditions are laboratory theoretical data

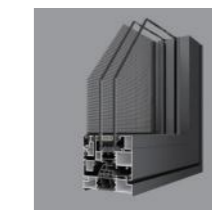
K5 TILT&TURN WINDOW



INNOVATIVE DESIGN

K5 features a German TENOFOAM 29mm width insulating strip, which provides superior thermal insulation; Filled with foam insulation material that effectively slows down and obstructs the transmission of noise. A tilt and turn window can not only prevent direct cold drafts where the wind enters from the side for ventilation, but also easy for cleaning from indoor.

- Profile thickness:1.8mm
- Frame Depth:80/100mm
- Frame Width:19.2mm
- Sash Width:70.4mm
- Glass Standard:5G+27A+5G
- Hardware:SIEGENIA
- Mesh:304 ss/316 ss/Nylon



PERFORMANCE

Thermal Insulation	Wind Resistant	Sound Insulation(Rw)	Air tightness	Water Tightness
2.5>Uw≥2.0W/m²K	4.5>P3≥4.0kPa	32dB	LEVEL 7	500≤ΔP<700pa

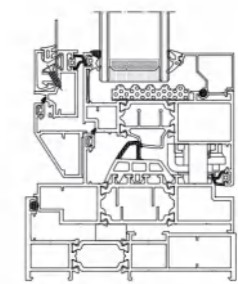
*Note:Performance based on glazing and size,the above conditions are laboratory theoretical data



INNOVATIVE DESIGN

110 stronger reinforced window frames can significantly reduce energy loss by preventing drafts and maintaining a better seal. This, in turn, can contribute to lower heating and cooling costs. The structural support offered by modern aluminum alloys can easily support the weight of heavy glass panes.

- Profile thickness:2.8mm
- Frame Depth:112mm
- Frame Width:25mm
- Sash Width:70.4mm
- Glass Standard:
5G+27A+5G(Tilt&Turn)
5G+20A+5G(Out swing)
- Hardware:SIEGENIA
- Mesh:304 ss/316 ss/Nylon

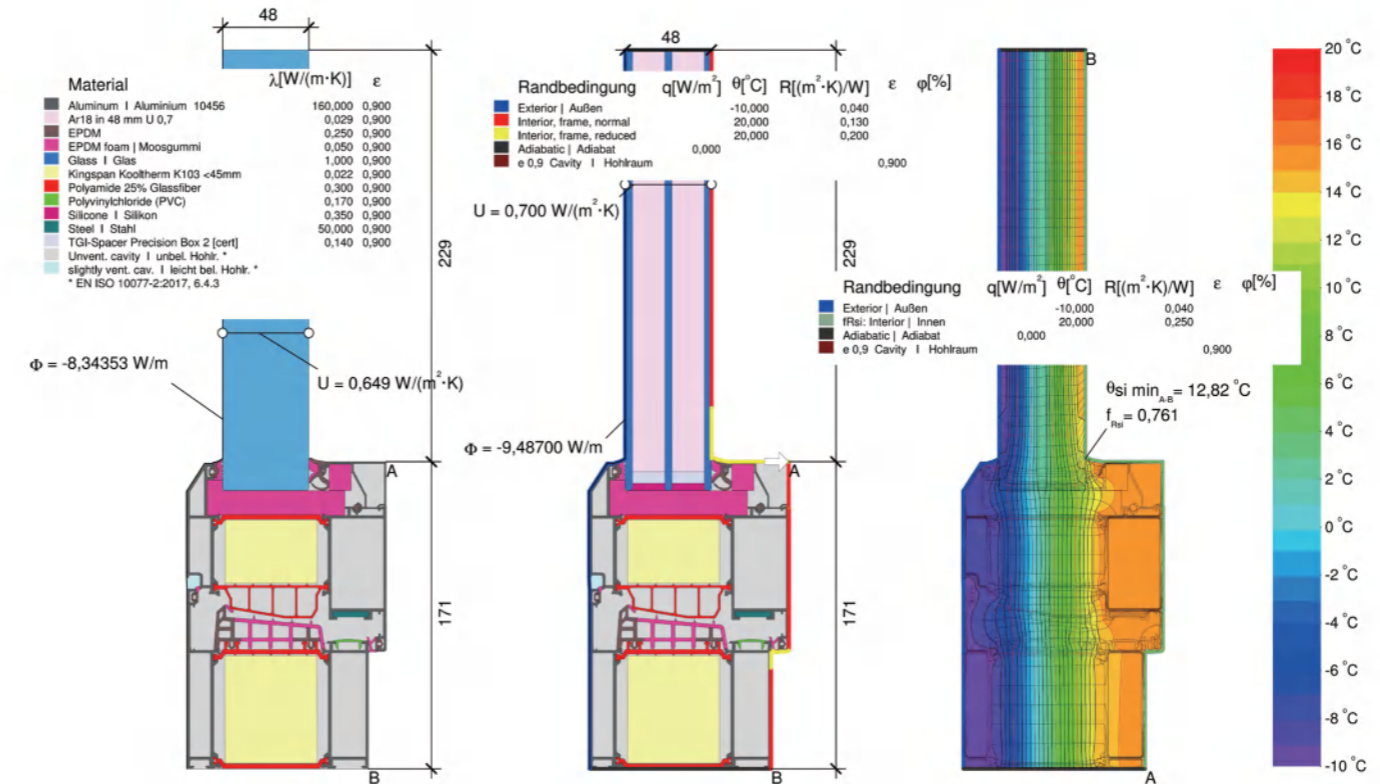




INNOVATIVE DESIGN

Apollo have passed the PHI passive window certification, and are certified for the most difficult climate zone - the cold temperate climate, suitable for Nordic countries. Equipped with imported TECHNOFORM PA66GF25 insulation strips as standard, using ultra-wide 64mm insulation strips, and the insulation effect is 2-3 times higher than conventional ones.

- Profile thickness:2.0mm
- Frame Depth:110mm
- Frame Width:40.8mm
- Sash Width:79mm
- Glass Standard:
6G Low-e+16A+6G
Low-e+16A+5G+16A+5G,warn edge spacer
- Hardware:SOBINCO



PERFORMANCE

Thermal Insulation 0.78W/m²K	Wind Resistant P3≥5.0kPa	Sound Insulation(Rw) 42dB	Air tightness LEVEL 8	Water Tightness 500≤ΔP<700pa
--	------------------------------------	-------------------------------------	---------------------------------	---

*Note:Performance based on glazing and size,the above conditions are laboratory theoretical data



- Inwards/Outwards Open
- Electric Parallel Open
- Electric Awning Window
- Manual Parallel Open

INNOVATIVE DESIGN

R9 Electric Curtain Wall Parallel Opening Window is designed to open along all four sides, facilitating excellent air circulation. This window system offers total design flexibility with various opening options including inward opening, single and double leaf configurations, bottom-hung, and tilt-turn. It features a robust six-point locking mechanism, ensuring high security and achieving the RC3 anti-theft standard.

- Profile thickness:1.8-3.0mm
- Frame Depth:174.8mm
- Frame Width:30mm
- Sash Width:55mm
- Glass Standard:5G+27A+5G
- Hardware:SOBINCO



PERFORMANCE

Thermal Insulation 0.78W/m²K	Wind Resistant P3≥5.0kPa	Sound Insulation(Rw) 42dB
Air tightness LEVEL 8	Water Tightness 500≤ΔP<700pa	

*Note:Performance based on glazing and size,the above conditions are laboratory theoretical data



INNOVATIVE DESIGN

T3 basic sliding window feature a standard thermal insulation properties, designed for office, apartment buildings or residential homes without high requirements for technical fittings. Double glazing with argon gas filled can significantly impact your quality of life with a noise-cancelling atmosphere.

- Profile thickness: 1.2-1.6mm
- Frame Depth: 110mm
- Frame Width: 40.8mm
- Sash Width: 60mm
- Glass Standard: 4G+12A+4G
- Hardware: China brand
- Mesh: 304 ss



PERFORMANCE

Thermal Insulation 4.0 > Uw ≥ 3.5 W/m²K	Wind Resistant 4.5 > P3 ≥ 3.5 kPa	Sound Insulation(Rw) 26dB	Air tightness LEVEL 3	Water Tightness 250 ≤ ΔP < 350 pa
--	--	-------------------------------------	---------------------------------	--



Type: 3 Track 2 Panel 3 Track 4 Panel

INNOVATIVE DESIGN

T5 window sash is integrated into the frame, providing exceptional water-tight and airtight, wind resistance performance, ideal for a panoramic view, with a single sash capable of reaching a maximum width of 2.5m. The upper track has anti-sway and anti-jump wheels to effectively prevent the risk of window sashes falling in hurricane weather.

- Profile thickness: 1.8-3.0mm
- Frame Depth: 135mm
- Frame Width: 78mm
- Mullion Width: 34mm
- Sash Width: 34mm
- Glass Standard: 5G+16A+5G
- Hardware: BOGO
- Mesh: 304 ss



PERFORMANCE

Thermal Insulation 4.0 > Uw ≥ 3.5 W/m²K	Wind Resistant 4.5 > P3 ≥ 3.5 kPa	Sound Insulation(Rw) 26dB	Air tightness LEVEL 3	Water Tightness 250 ≤ ΔP < 350 pa
--	--	-------------------------------------	---------------------------------	--

*Note: Performance based on glazing and size, the above conditions are laboratory theoretical data

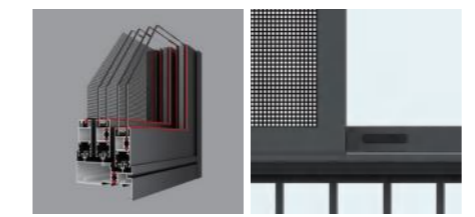


Type: 3 Track 2 Panel 3 Track 3 Panel 3 Track 4 Panel

INNOVATIVE DESIGN

YELAN Thermal break sliding window is engineered with a sophisticated single-sided automatic locking mechanism that ensures smooth, effortless operation and operates silently. Enhanced with a dual anti-theft lock point system, this design doubles the security, providing homeowners with superior protection and peace of mind.

- Profile thickness:1.4mm
- Frame Depth:110mm
- Frame Width:36mm
- Mullion Width:65mm
- Sash Width:65mm
- Glass Standard:5G+12A+5G
- Hardware:China brand
- Mesh:304 ss/316 ss



PERFORMANCE

Thermal Insulation	Wind Resistant	Sound Insulation(Rw)	Air tightness	Water Tightness
4.0>Uw≥3.5W/m²K	4.5>P3≥3.5kPa	26dB	LEVEL 3	250≤ΔP<350pa

*Note:Performance based on glazing and size,the above conditions are laboratory theoretical data

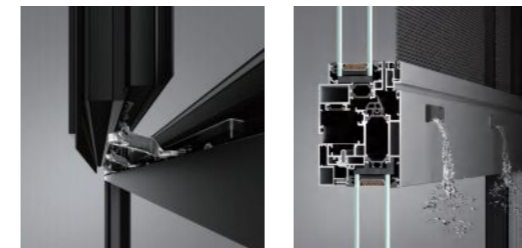
H3 MULTI-OPEN WINDOW



INNOVATIVE DESIGN

H3 multi-opening window offers flexibility in life. Its horizontal sliding mechanism saves indoor space, prevents obstructions, and ensures excellent ventilation while providing a breathtaking panoramic view. The invisible track design adds a touch of luxury and elegance. With an inward tilt feature for micro-ventilation, it allows a controlled 115mm opening, enhancing air quality.

- Profile thickness:1.8mm
- Frame Depth:96mm
- Frame Width:mm
- Sash Width:70mm
- Glass Standard:5G+27A+5G
- Hardware:WEHAG
- Mesh:Nylon



PERFORMANCE

Thermal Insulation
2.0>Uw≥1.6W/m²K

Wind Resistant
P3≥5.0kPa

Sound Insulation(Rw)
32dB

Air tightness
LEVEL 7

Water Tightness
500≤ΔP<700pa

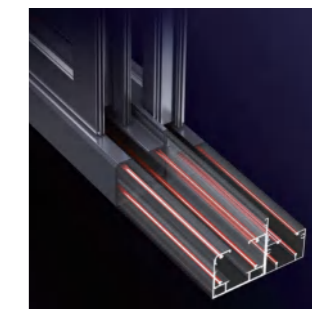
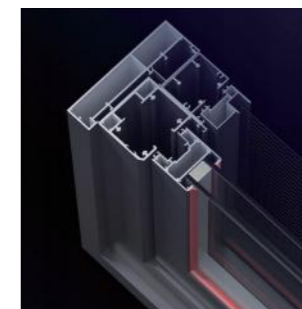
*Note:Performance based on glazing and size,the above conditions are laboratory theoretical data



INNOVATIVE DESIGN

MODENA folding windows combine style and functionality, offering an ultra-slim profile that minimally obstructs light. By folding away, they open up your home to the outdoors, providing unrestricted panoramic views and significantly enhancing natural ventilation. Whether for a cozy living room or a spacious kitchen, folding windows transform spaces into beauty.

- Profile thickness:1.6-3.0mm
- Frame Depth:120mm
- Frame Width:47mm
- Sash Width:44.5mm
- Glass Standard:5G+15A+5G
- Hardware:HOPO
- Mesh:Nylon



TRENTO FOLD UP WINDOW



INNOVATIVE DESIGN

TRENTO fold-up window feature convenient pull handle and secure lock handle. Designed to open both inward and outward, it offers versatile ventilation options and easy access. Ideal for kitchens and plants areas, perfect decorative elements that complement residential homes, offices, and commercial spaces alike, transform everyday living and working environments into more inviting and aesthetically pleasing areas.

- Profile thickness:1.8mm
- Frame Depth:55mm
- Frame Width:65mm
- Sash Width:67.5mm
- Glass Standard:5G+9A+5G
- Hardware:China Brand
- Mesh:Nylon





INNOVATIVE DESIGN

T9 innovative window system offers an unparalleled wide outdoor view with spans up to 4.5 meters. Featuring intelligent controls, superior thermal and acoustic insulation, it enhances comfort and energy efficiency. The 100mm-wide handrail boosts structural integrity, ensuring resilience against strong winds and storms, providing both aesthetic appeal and robust performance for contemporary living environments.

- Profile thickness:1.8-3.0mm
- Frame Depth:168mm
- Mullion Width:21mm
- Sash Width:46mm
- Glass Standard:8G+18A+8G
- Mesh:Polyester Mesh



PERFORMANCE

Thermal Insulation

3.5>Uw≥3.0W/m²K

Wind Resistant

4.5>P3≥4.0kPa

Sound Insulation(Rw)

32dB

Air tightness

LEVEL 7

Water Tightness

500≤ΔP<700pa

*Note:Performance based on glazing and size,the above conditions are laboratory theoretical data

H5 SLIDE COMPACT WINDOW



INNOVATIVE DESIGN

H5 innovative sliding window design employs a squeeze-type closing mechanism to address common issues with poor sealing in sliding windows and the space occupation of casement windows. The sash and frame are tightly pressed together, with three sealing strips installed around both components. A customized hardware system ensures these elements are firmly compressed, providing superior airtightness and space efficiency.

- Profile thickness:1.8mm
- Frame Depth:118mm
- Frame Width:64mm
- Sash Width:78.4mm
- Glass Standard:5G+20A+5G
- Hardware:ROTO
- Mesh::304 ss/316 ss/Nylon



PERFORMANCE

Thermal Insulation

3.5>Uw≥3.0W/m²K

Wind Resistant

P3≥5.0kPa

Sound Insulation(Rw)

32dB

Air tightness

LEVEL 6

Water Tightness

500≤ΔP<700pa

*Note:Performance based on glazing and size,the above conditions are laboratory theoretical data



INNOVATIVE DESIGN

SAVONA ultra-slim folding doors revolutionize interior home design, offering a modern aesthetic with multi-panel sliding functionality. These doors feature heavy-duty top-hung rollers that ensure smooth operation even with substantial door panels. Constructed from an aluminum alloy frame, they are durable, resistant to deformation, and capable of withstanding humid environments. This innovative design enhances the visual appeal of any living area.

- Profile thickness:2.0mm
- Frame Depth:76mm
- Frame Width:47mm
- Sash Width:18mm
- Glass Standard:8G/5G+12A+5G
- Hardware:OPK





INNOVATIVE DESIGN

BOLOGNA Folding doors offer a full, unobstructed opening by folding to one side, solving the issue of reduced open space found in regular sliding doors. Ideal for balconies and courtyards, they provide a large, clear view. The door's middle gap is designed to prevent finger pinching, with a rubber strip filling the space when closed. The upper rail features an anti-slip design, ensuring the door remains secure even in strong winds and heavy rain, enhancing safety and wind resistance.

- Profile thickness:2.2mm
- Frame Depth:78mm
- Frame Width:60mm
- Sash Width:59mm
- Glass Standard:5G+27A+5G
- Hardware:WEHAG



PERFORMANCE

Thermal Insulation

3.5>Uw≥3.0W/m²K

Wind Resistant

4.0>P3≥3.5kPa

Sound Insulation(Rw)

35dB

Air tightness

LEVEL 6

Water Tightness

350≤ΔP<500pa

*Note:Performance based on glazing and size,the above conditions are laboratory theoretical data



INNOVATIVE DESIGN

LANCE Lift sliding doors provide excellent sealing with a tight fit between the door and frame. They also allow for minimal ventilation by fixing at any point, giving you better control over airflow and isolation. When fully closed, it prevents intruders from tampering with or damaging the door from the bottom, enhancing security.

- Profile thickness:2.0mm
- Frame Depth:131mm(2 track)
196mm(3 track)
- Frame Width:37mm
- Mullion Width:50mm(LANCE)/
95mm(LANCE PLUS)
- Sash Width:95mm
- Glass Standard:5G+27A+5G
- Hardware:CHINA Brand/SOBINCO Edge
Lift Mechanism(Max Weight 400kg)
- Mesh:304 ss/316 ss



PERFORMANCE

Thermal Insulation
2.5>Uw≥2.0W/m²K

Wind Resistant
P3≥5.0kPa

Sound Insulation(Rw)
38dB

Air tightness
LEVEL 8

Water Tightness
500≤ΔP<700pa

S5 HEAVY DUTY SLIDING DOOR



INNOVATIVE DESIGN

S5 ideal for balcony and patio doors for residential. Meanwhile, it can be equipped with advanced silent motor, these doors offer face and palm recognition for secure access, along with remote control convenience. Perfectly suited for commercial use.

- Profile thickness: 2.2mm
- Frame Depth: 124mm (2 track) / 178mm (3 track)
- Frame Width: 37mm
- Mullion Width: 73mm
- Sash Width: 73mm
- Glass Standard: 5G+20A+5G
Hardware: CHINA Brand / SOBINCO Edge Lift Mechanism (Max Weight 400kg)
- Mesh: 304 ss / 316 ss / Nylon



PERFORMANCE

Thermal Insulation 3.5 > Uw ≥ 3.0 W/m²K	Wind Resistant 4.0 > P3 ≥ 3.5 kPa	Sound Insulation (Rw) 35 dB	Air tightness LEVEL 6	Water Tightness 350 ≤ ΔP < 500 pa
--	--	---------------------------------------	---------------------------------	--

Type: 2 Track 2 Panel 2 Track 4 Panel 3 Track 2 Panel 3 Track 4 Panel



INNOVATIVE DESIGN

S9 featuring a panoramic design with two panel glass, offer an impressive 30% increase in natural light when open, with single panels reaching up to 3m wide and 3.5m high. Engineered with superior load-bearing capacity and self-balancing . Upgrade to our smart electric control system for effortless operation, enhancing your home's elegance and comfort.

- Profile thickness:3.0-6.0mm
- Frame Depth:165mm
- Frame Width:50.5mm
- Mullion Width:22mm
- Sash Width:52mm
- Glass Standard:
6G+27A+6G
- Hardware:CHINA Brand(Max Weight 600kg)



PERFORMANCE

Thermal Insulation

3.5>Uw≥3.0W/m²K

Wind Resistant

4.0>P3≥3.5kPa

Sound Insulation(Rw)

35dB

Air tightness

LEVEL 6

Water Tightness

350≤ΔP<500pa

*Note:Performance based on glazing and size,the above conditions are laboratory theoretical data



Type: 2 Track 2 Panel 2 Track 4 Panel 3 Track 2 Panel 3 Track 3 Panel 3 Track 4 Panel



INNOVATIVE DESIGN

S3 basic sliding door feature a none-thermal bridge properties,designed for office,apartment buildings or residential homes without high requirements for technical fittings.Double glazing with argon gas filled can significantly impact your quality of life with a noise-cancelling atmosphere.

- Profile thickness:1.8-2.5mm
- Frame Depth:118mm(2 track)/178mm (3 track)
- Frame Width:36mm
- Mullion Width:73mm
- Sash Width:73mm
- Glass Standard:5G+20A+5G
- Hardware:CHINA Brand
- Mesh:304 ss/316 ss/Nylon



PERFORMANCE

Thermal Insulation 5.0>Uw≥4.0W/m²K	Wind Resistant 2.5>P3≥2.0kPa	Sound Insulation(Rw) 32dB	Air tightness LEVEL 3	Water Tightness 250≤ΔP<350pa
---	---	-------------------------------------	---------------------------------	---

*Note:Performance based on glazing and size,the above conditions are laboratory theoretical data



INNOVATIVE DESIGN

VAN GO solution can meet all your interior partition door needs! Create private spaces with open corner doors, offering flexibility in design. Enjoy a trackless system that eliminates the hassle of track cleaning and obstructions, providing smooth operation and a clean look. tailored to enhance any living or working space.

- Profile thickness:1.4-2.0mm
- Frame Depth:50mm(Top Hanging)/105mm(2 track)/160mm(3 track)
- Frame Width:36mm
- Mullion Width:25mm(VAN GO)/65mm(VAN GO PLUS)
- Sash Width:65mm
- Glass Standard:5G+16A+5G
Hardware:OPK



PERFORMANCE

Thermal Insulation

5.0>Uw≥4.0W/m²K

Wind Resistant

2.5>P3≥2.0kPa

Sound Insulation(Rw)

26dB

Air tightness

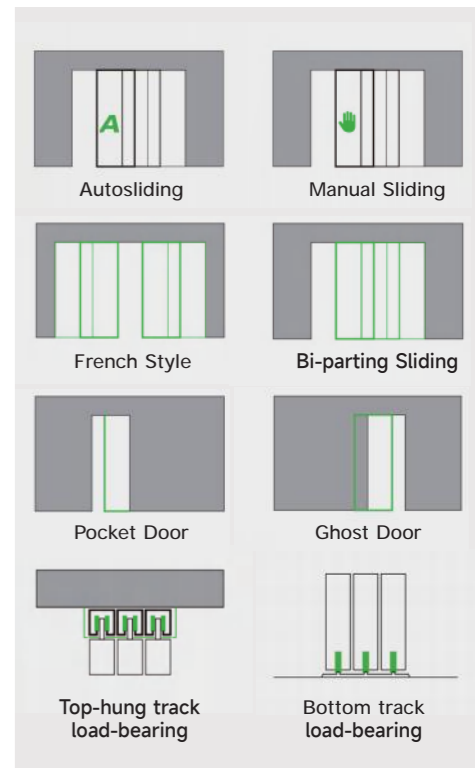
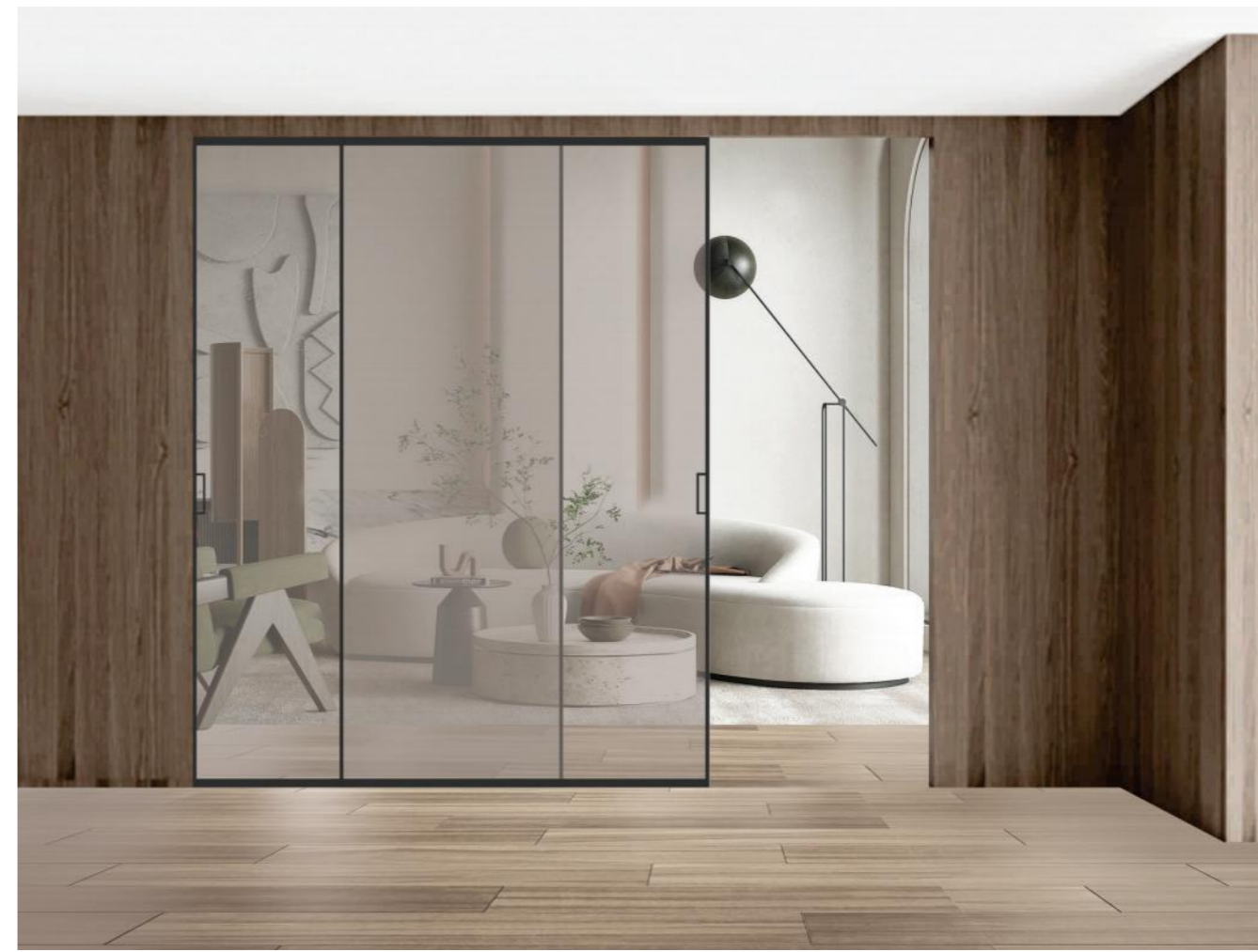
LEVEL 3

Water Tightness

250≤ΔP<350pa

- Type: 1 Track 1 Panel 1 Track 2 Panel 2 Track 2 Panel 2 Track 4 Panel 3 Track 3 Panel
 3 Track 6 Panel 2 Track 2 Panel corner open 3 Track 3 Panel corner open

*Note:Performance based on glazing and size,the above conditions are laboratory theoretical data



INNOVATIVE DESIGN

M5 combine innovative design and excellent craftsmanship, providing a variety of space solutions. High-quality materials and hardware system ensure durability and stability; flexible and changeable opening methods save space; elegant design adapts to a variety of decoration styles and personalized needs.

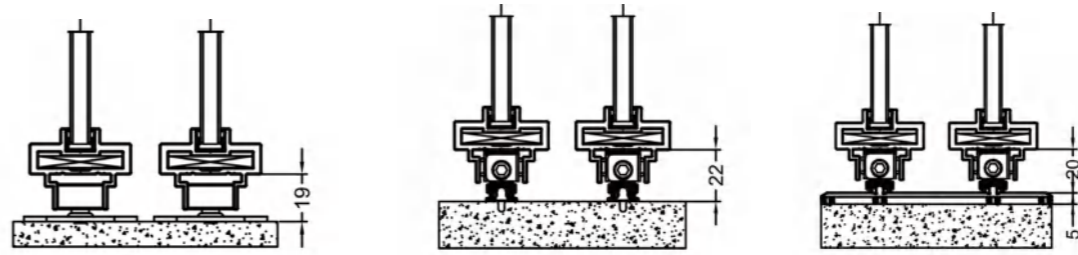
- Glass Standard: 8mm



INNOVATIVE DESIGN

YUNXI provide a genuine slim framed system whichever angle you view the doors from, making the system ideal for breaking down the boundaries between inside and out and flooding your home full of natural light. YUNXI can be designed with an innovative flush stacking detail, where all the panels slide neatly behind the next to create a contemporary appearance when the doors are opened.

- Profile thickness:1.4-3.0mm
- Frame Depth:53mm(Top Hanging) /105mm(2 track)/157mm(3 track)
- Frame Width:25mm
- Mullion Width:12mm
- Sash Width:18mm
- Glass Standard:8G
- Hardware::CHINA Brand



*No track

*Steel track

*Low track



- Type: 1 Track 1 Panel 1 Track 2 Panel 2 Track 2 Panel 2 Track 4 Panel 3 Track 3 Panel 3 Track 6 Panel Magnetic Levitation Electric Top-hung Stacking 3 Panel Telescope



INNOVATIVE DESIGN

YUNXI Hinged Door, offering both inward and outward opening options with a modern handle that ensures smooth operation. Featuring a magnetic silent lock mechanism, when open, with the latch retracting neatly. Upon closing, the magnetic attraction ensures a quiet, secure seal, eliminating any noise from latch-to-lock body contact to ensure every detail enhances your daily life

- Profile thickness:1.4-3.0mm
- No casing/Single casing/Double Casing
- Frame Width:25mm
- Sash Width:18mm
- Glass Standard:8G
- Hardware::BOGO





INNOVATIVE DESIGN

VAN GO aluminum hinged door offers a robust, cost-effective solution that is easy to maintain. Featuring an anti-corrosive layer, it prevents rust and ensures longevity, while its exceptional dimensional stability resists warping, providing reliable performance over time. This door delivers excellent value for money. For those concerned about noise, the option with double-glazed glass enhances sound insulation, creating a quieter interior environment.

- Profile thickness:1.4-3.0mm
- No casing/Single casing/Double Casing
- Frame Width:23mm
- Sash Width:65mm
- Glass Standard:4G+16A+4G
- Hardware::BOGO





INNOVATIVE DESIGN

R3M swing door with integrated windows offers a secure, contemporary entry solution that enhances the openness of exterior spaces. The option to be installed by incorporating blinds within them which provides added privacy. Ideal for homes and commercial spaces seeking a balance between security, elegance, and practicality.

- Profile thickness:1.8mm
- Frame Depth:110mm
- Frame Width:26.4mm
- Sash Width:83.6mm
- Glass Standard:5G+20A+5G
- Hardware:WEHAG
- Mesh:304 ss/316 ss



PERFORMANCE

Thermal Insulation	Wind Resistant	Sound Insulation(Rw)	Air tightness	Water Tightness
3.5>Uw≥3.0W/m²K	P3≥5.0kPa	32dB	LEVEL 6	350≤ΔP<500pa

*Note:Performance based on glazing and size,the above conditions are laboratory theoretical data



INNOVATIVE DESIGN

P5 exterior door offers versatile inward and outward opening options, enhancing accessibility. The passive leaf is securely locked into the frame using shootbolts and a high-quality handle set for a french door, achieving a streamlined, contemporary look. Featuring a multi-point locking system, provides robust protection, making it an excellent choice for modern homes seeking both style and safety.

- Profile thickness:2.2mm
- Frame Depth:70mm/160mm
- Frame Width:67.6mm
- Sash Width:98.6mm
- Glass Standard:5G+20A+5G
- Hardware:HOPPE(handle)
SIEGENIA(lock)
SOBINCO(hinge)
- Mesh:304 ss/316 ss



PERFORMANCE

Thermal Insulation	Wind Resistant	Sound Insulation(Rw)	Air tightness	Water Tightness
2.5>Uw≥2.0W/m²K	P3≥5.0kPa	35dB	LEVEL 6	350≤ΔP<500pa

*Note:Performance based on glazing and size,the above conditions are laboratory theoretical data



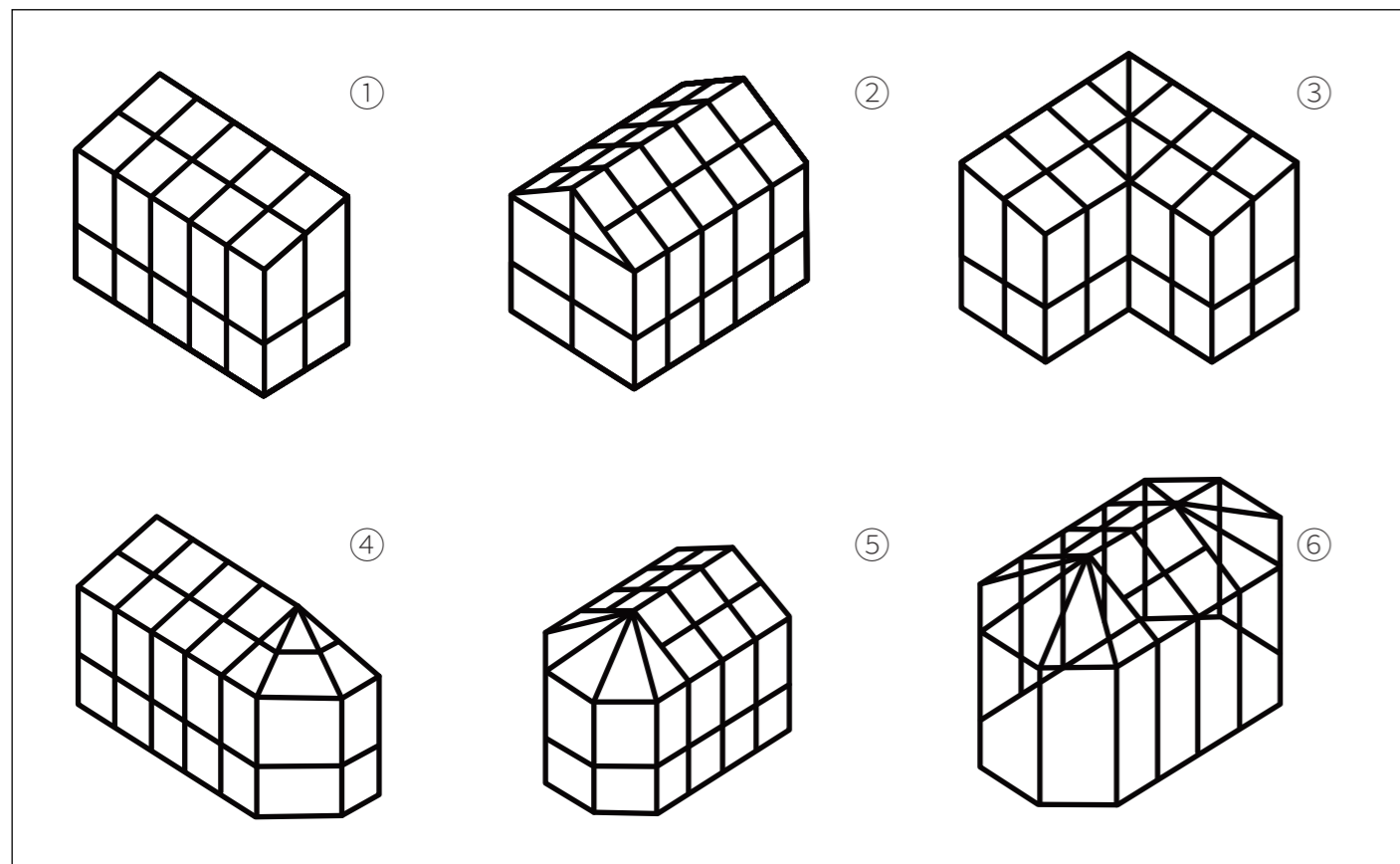
Adding Value to Your Home

A 4-season sunroom not only provides additional living space but also increases your home's value. Prospective buyers often appreciate the versatility and extra square footage a sunroom offers. To maximize the return on your investment, ensure the sunroom's design complements the rest of your home.

- The aluminum alloy square tube featuring a sleek appearance by concealing screws within its structure ;
- The thermally-insulated aluminum sun room does not require welding and can be disassembled and assembled many times.
- The thermal conductivity of broken bridge aluminum profile is half that of ordinary steel, and can enhance the thermal insulation by 30%.



PROVIDE A VARIETY OF SUN ROOM TYPES

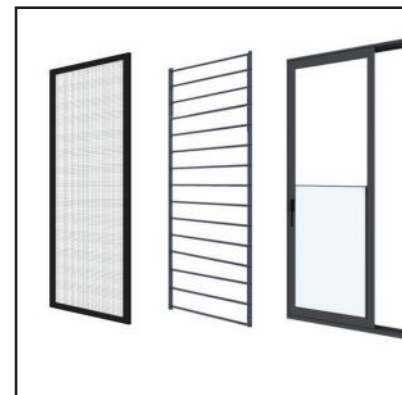


Adding Value to Your Home





CUSTOMIZE



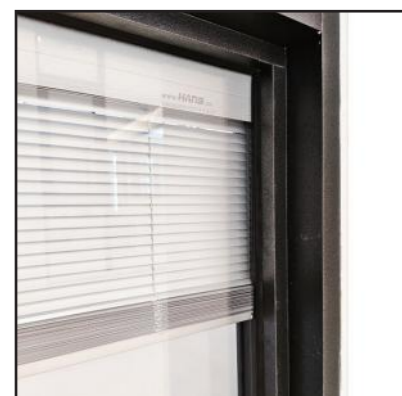
SECURITY

- Screen Material: 304/316 stainless steel mesh or high transparency nylon mesh, opening type: casement/awning/folding
- Aluminum Guardrail
- Laminated Glass Guardrail



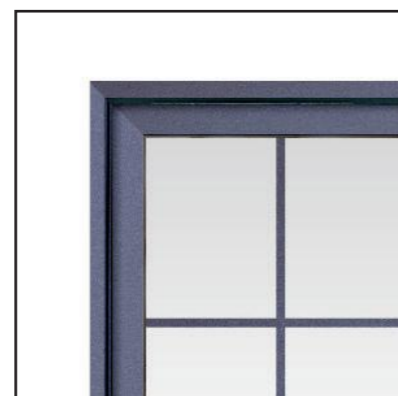
ROOF WINDOW

- Fixed Skylight
- Electric Skylight
- Mesh Screen
- HANS Electric Blinds



BUILT-IN BLINDS

- HANS Magnetically Controlled Manual Blinds
- HANS Solar Electric Blinds



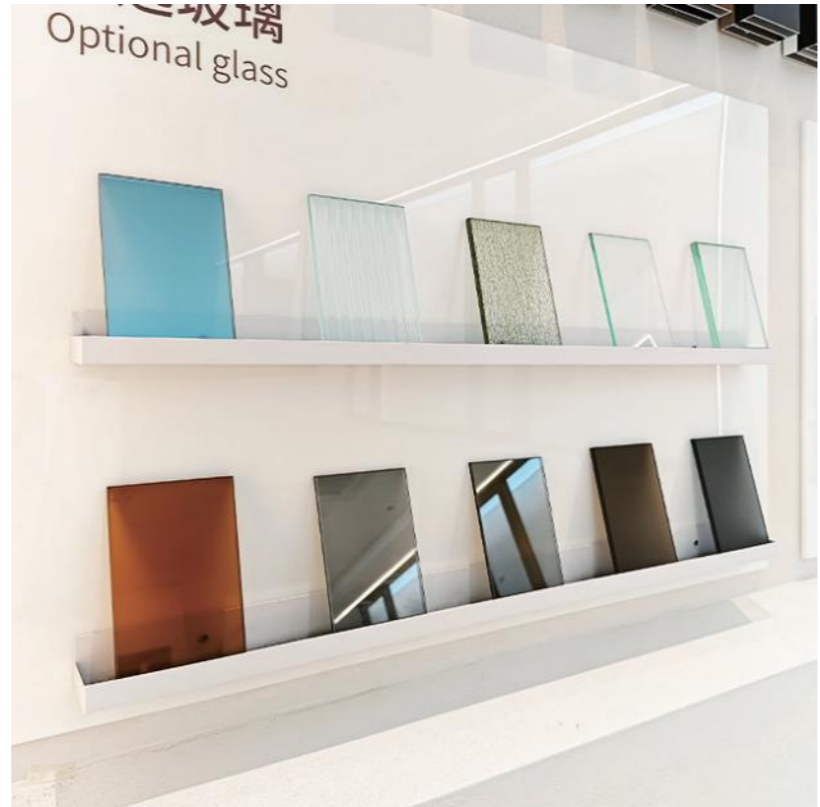
BARS

- Built-in Aluminum Bars
- External Aluminum Bars
- Multiple Types

BRAND HARDWARE



GLASS TYPE OPTION

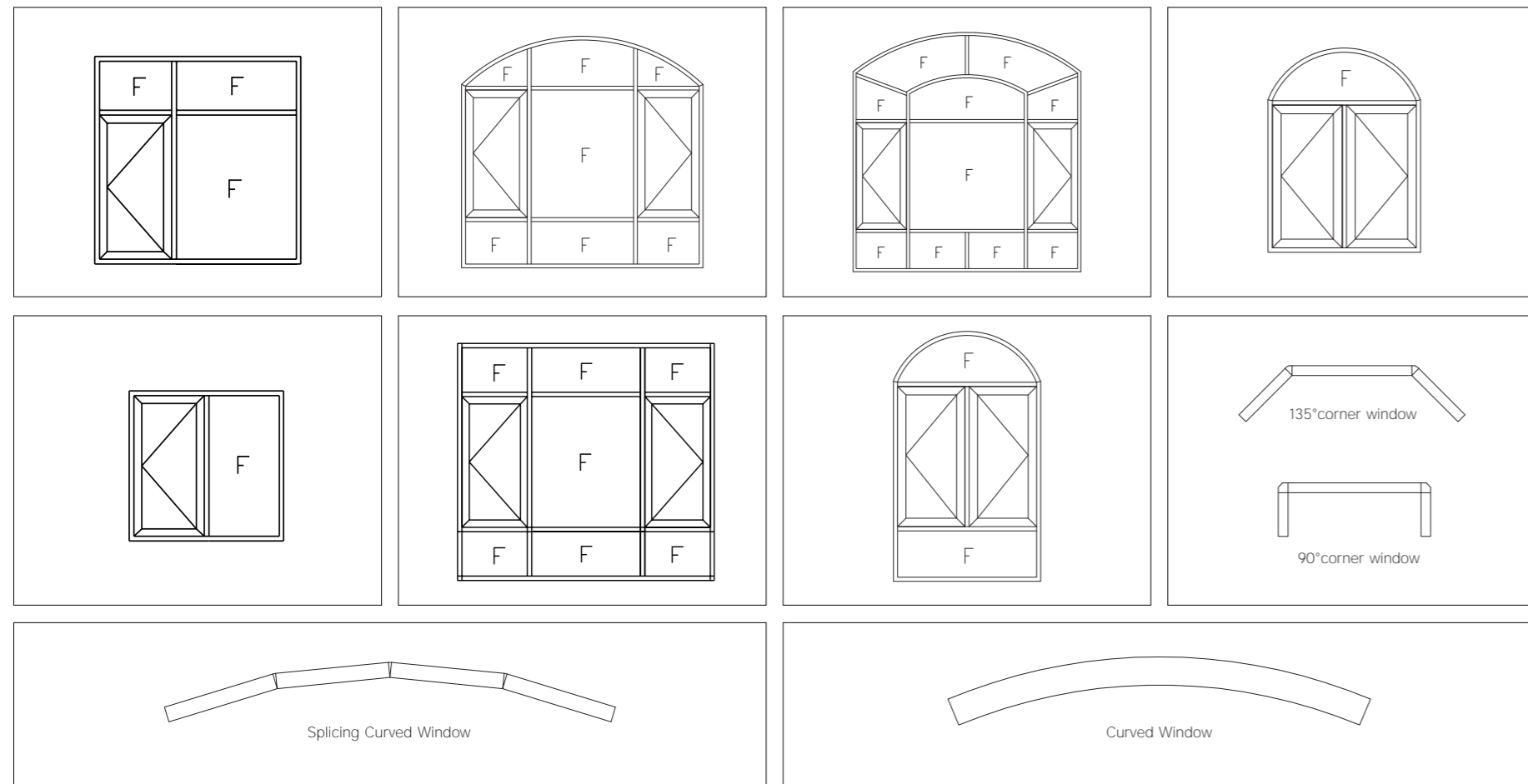


- Type: Double Glass Triple Glass Laminated Glass Clear Glass Ultra-clear Glass LOW-E Glass Frosted Glass Reflective Glass
 Tinted Glass Obscure Glass Fluted Glass Bullet-proof Glass Wired Glass Curved Glass Float Glass

PROFILE COLOR OPTION



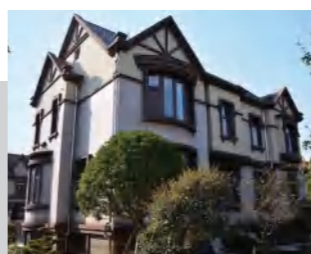
WINDOW TYPE OPTION



RESOURCE

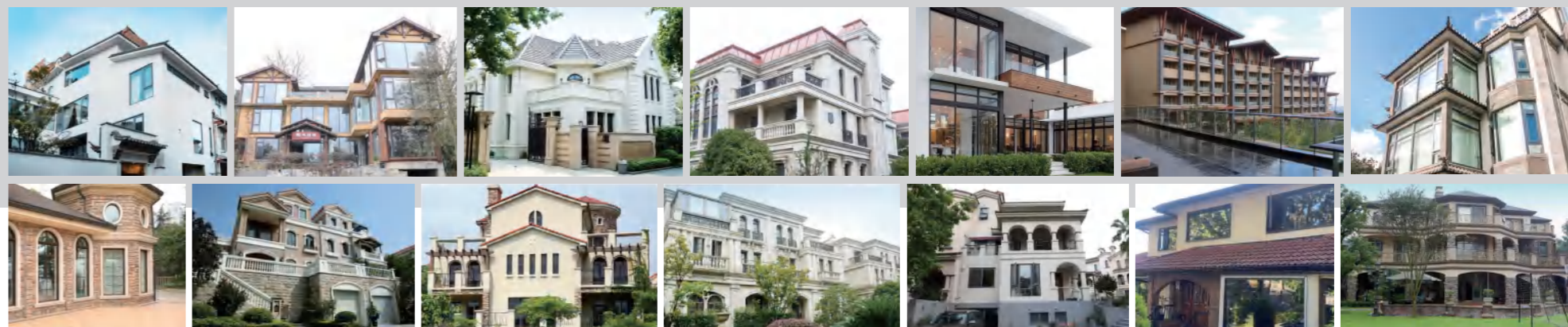
MASTERING QUALITY AT THE SOURCE,
LEVERAGING TOP-TIER GLOBAL RESOURCES





PROJECT

800,000+ Project Experience of Residents,
Villas&Commercial



BECOME ROLANSINI DISTRIBUTOR




- FREE DESIGN
- FREE SAMPLE
- FREE MATERIAL


START AT LOW COST!


Guangdong Rolansini Home Furnishing Technology Co.,Ltd.


 Factory 6, F2, No.5, Yilong Road,Lubao Town, Sanshui District, Foshan City, Guangdong Provice,China

 marketing001@rolansini.com

 @Rolansini_window

 Rolansini Window and Door

 Rolansini_window

 www.rolansini-windows.com